



Dear researcher at SDU

The last month of the season is upon us and we're ready to provide you with the last newsletter from the eScience Center in 2023.

Our newsletter for November includes four key news stories:

SDU will be visited by the Danish e-infrastructure Consortium (DeiC) on **the 29th of February 2024**, where you can find out more about the many possibilities for national services in DeiC, including how your research group/department can take advantage of the resources available to SDU through DeiC. Find out how to register below – we look forward to an exciting day!

SDU has opened a new internal call for HPC resources. The resources will be available during the first half of 2024 (1st of January to 30th of June). Please submit your application no later than the **3rd of December**.

Due to a major upgrade of the infrastructure, UCloud will be down all day on the **4th of December** (see more details below).

The third and final case in the series on Interactive HPC usage **in humanities**.

We hope you enjoy reading.

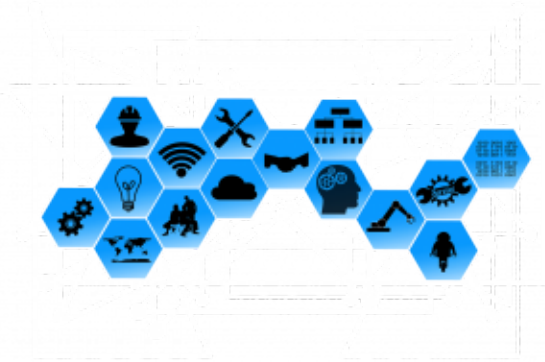
The next eScience Center newsletter will be out in February 2024.



[Supercomputing for computational linguistics and \(social\) media data](#)

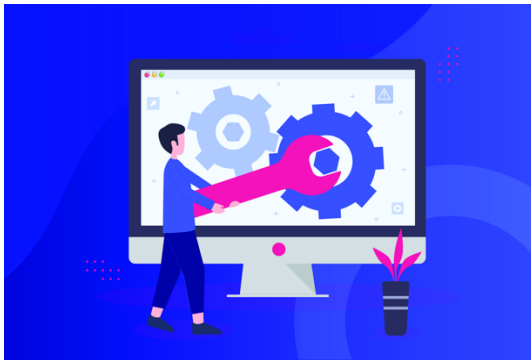
The third and final case in the series on Interactive HPC usage in humanities is out now. Check it out – especially if you are a humanities researcher! [Read More](#)

...



[Apply for HPC resources \(SDU employees only\)](#)

We are opening a new call for national HPC resources at SDU. The resources will be available during the first half of 2024 (1st of January to 30th of June). Please submit your application [Read More ...](#)



[Upgrade of the UCloud infrastructure](#)

On Monday, December 4th, we are performing a major upgrade to UCloud's infrastructure. This means that the system will be down for most of the day. The upgrade includes i.a. an update to our WekaFS storage system [Read More ...](#)



[Information meeting on DeiC at SDU](#)

AI, machine learning, quantum, life sciences, climate and biodiversity modelling, bioinformatics, digital humanities – many research fields today require handling of large data sets or use advanced computational approaches. These [Read More ...](#)

Contact us

SDU eScience Center
University of Southern
Denmark

Campusvej 55, 5230
Odense M, Denmark
escience@sdu.dk

For user support:
support@escience.sdu.dk

SDU Data Protection



Collaborations



AALBORG
UNIVERSITY



AARHUS
UNIVERSITY