







Dear researcher at SDU


Welcome to the SDU eScience Center newsletter for April 2024, where we bring you the latest news and updates from our center and the wider eScience community. Here are some of the highlights for this issue:

 **Denmark to Host One of the World's Most Powerful AI Supercomputers!** As you may have heard in the media, Denmark is set to establish a national AI innovation center featuring one of the world's most powerful AI supercomputers. Supercomputer expert and leader of the SDU eScience Center, Prof. Claudio Pica, was consulted by the Novo Nordisk Foundation during the year-long process to establish the new center and AI supercomputer, and he will continue to work closely with the foundation in the coming months.

 **Danish e-infrastructure Consortium (DeiC) at SDU.** Recently, DeiC visited SDU to shed light on the national supercomputers and their immense potential across various research fields. If you missed the event, you can read about it below.

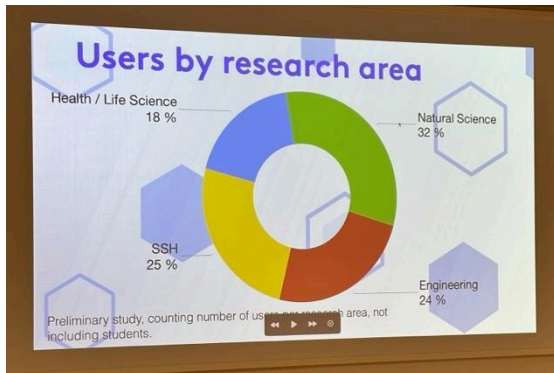
 **UCloud User Milestone:** Our UCloud platform, which powers the DeiC Interactive HPC service, has surpassed 9000 users!

 **Meet Jonas Alexander Whittlestone:** Joining the SDU Front Office, Jonas brings a unique blend of expertise in social science, computer science, and political science. His insights will be invaluable for our growing user base in social sciences and humanities.

 **Deadlines:** Remember that SDU currently has an open call for local HPC resources, with applications due by the **14th of April 2024 at 23:59** (see more [here](#)).

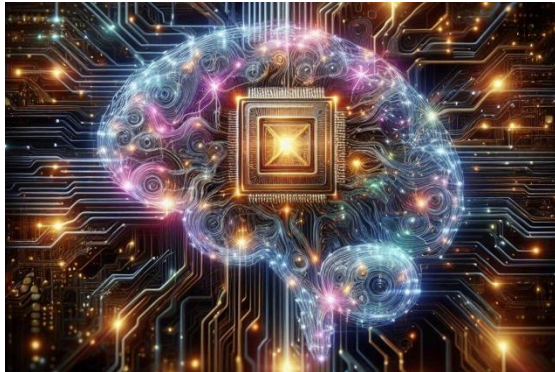
We hope you enjoy reading. If you have any questions, comments, or suggestions, please do not hesitate to contact us. We are always happy to hear from you and assist you with your eScience needs.

The next SDU eScience Center newsletter will be out in June 2024.



[Have you used a supercomputer today?](#)

Supercomputers are ready to boost your research both here at SDU and at a number of other Danish universities. But what difference can supercomputers make? This was the focus when the Danish e-infrastructure Consortium (DeiC) visited SDU. [Read More ...](#)



[Denmark will host one of the world's most powerful AI supercomputers](#)

Denmark is set to establish a national AI innovation center featuring one of the world's most powerful AI supercomputers. The initiative is led by the Novo Nordisk Foundation and the Export and Investment Fund of Denmark (EIFO) and aims to [Read More ...](#)



[Welcome to our new employee](#)

On the 1st of February 2024, the SDU eScience Center welcomed its newest employee, Jonas Alexander Whittlestone. Jonas has joined the research support unit/SDU Front Office where his educational background in social science (major) and computer [Read More ...](#)



[9000 users on UCloud](#)

UCloud, the platform that powers the DeiC Interactive HPC service, has achieved another remarkable feat: it now has more than 9000 users! The graph below shows the number of users on UCloud from March 2022 to February 2024. It clearly [Read more ...](#)

Contact us

SDU eScience Center
University of Southern
Denmark
Campusvej 55, 5230
Odense M, Denmark
escience@sdu.dk
For user support:
support@escience.sdu.dk

SDU Data Protection



Collaborations

