



Dear researcher at SDU

Welcome to the first SDU eScience Center newsletter after the summer break. We hope you enjoyed your summer! This edition is packed with the latest news and updates from our center and the wider eScience community. Here are the highlights:

At the end of July, we received **16 new NVIDIA H100 GPUs** 🖥️. This means that the DeiC Interactive HPC/UCloud service now offers 32 H100 GPUs!

🤖 You might want to check out a new category in the App Store on UCloud: we have started adding **apps for AI**. So far, the apps **ChatUI** (an open-source implementation of a ChatGPT-like web application) and **Text Generation** (which lets you fine-tune large language models to suit your needs) are available.

You can also read a wonderful article about the impact UCloud has had on digital research in Denmark: with the new user interface and more than **11.000 users**, it has established itself as one of Europe's most popular High Performance Computing (HPC) facilities. 🌐

Notice also that we upgraded our internet connection to 100 Gbps! 🌐👉

📅 Deadlines to be aware of:

👉 **3rd of October 2024 at 23:59**: Apply for local HPC resources for the spring period of 2025 (January 1st until 30th of June).

👉 You can still apply for local HPC resources for **the fall period of 2024** - but hurry up as we are allocating according to a first come, first served principle.

We hope you enjoy reading. If you have any questions, comments, or suggestions, please do not hesitate to contact us. We are always happy to hear from you and assist you with your eScience needs.

The next SDU eScience Center newsletter will be out in November 2024.





[16 new H100 AI GPUs arrive at SDU](#)

Towards the end of July, four servers with four NVIDIA H100 GPUs each arrived at SDU. The GPUs have been added to the DeIC Interactive HPC (UCloud) system, meaning that the DeIC Interactive HPC service now offers 32 H100 GPUs, which are [Read More ...](#)



[SDU opens call for HPC resources for spring 2025](#)

Researchers at SDU can now apply for so called “large projects” for HPC resources available from 1st of January to 30th of June 2025. The deadline for applications is 3rd of October 2024 at 23:59. Large projects are projects that require more than [Read More ...](#)



[Apply for HPC resources for fall 2024 \(SDU employees only\)](#)

We are opening a new call to distribute the remaining resources for the second half of 2024. The current call is continuously open until we have allocated all available resources. We will allocate resources according to a first-come-first-served principle. Notice [Read More ...](#)



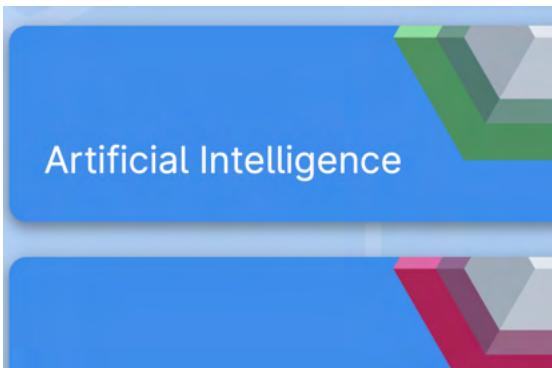
[Internet upgrade to 100 Gbps](#)

We recently upgraded our internet connection from 10 Gbps to 100 Gbps (gigabits per second). This will significantly improve data transfer capabilities from the SDU eScience Center to other data centers in Denmark and Europe. With 100 Gbps speed, [Read More ...](#)



[DeiC Interactive HPC Revolutionises Interdisciplinary Research with User-Friendly Supercomputing Access](#)

With 10,000 users, DeiC Interactive HPC has established itself as one of Europe's most popular HPC facilities, thanks to an unprecedented democratisation of access to advanced computing resources. [Read More ...](#)



[New applications for AI on UCloud](#)

First, the DeiC Interactive HPC consortium secured the most powerful hardware for AI: NVIDIA H100 GPUs, which are hosted at the SDU data center and available via the UCloud platform. Now, we are thrilled to announce the launch of two applications for AI [Read More ...](#)

Boost your research with digital tools



RESEARCH SUPPORT

From basic to high-level technical support



NATIONAL HPC SYSTEMS

Request access to storage and computing resources



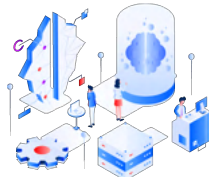
DATA MANAGEMENT

Transfer and share research data



UCLLOUD PLATFORM

Boost your research with interactive HPC



TRAINING & TUTORIALS

Sign in for our thematic workshops and training programs



NEW SOFTWARE APPLICATIONS

Request specific software applications



HIPPO
big memory computing



Contact us

SDU eScience Center
University of Southern
Denmark
Campusvej 55, 5230
Odense M, Denmark
escience@sdu.dk
For user support:
support@escience.sdu.dk

eScience.sdu.dk

SDU Data Protection

ISO 27001

BUREAU VERITAS
Certification



Collaborations

DeiC

DTU



AALBORG UNIVERSITY



AARHUS UNIVERSITY