

SDU eScience center



Dear researcher at SDU

Welcome to the latest edition of the SDU eScience Center's newsletter. As always, we bring you the most recent updates and exciting developments from our center and the broader eScience community. Here are the highlights:



The past few weeks have been especially exciting for us and we've been gaining recognition for our contributions to high-performance computing and data-driven research:



In the Spotlight. We were recently featured in **Ingeniøren** for our role in operating Europe's most utilized supercomputer and how we're helping researchers harness its power for groundbreaking science. Part of the focus of the article was that SDU has just received **Denmark's first NVIDIA B200 GPUs!** 🇩🇰



On the Air. Additionally, TV2 Fyn paid us a visit to explore how our infrastructure supports everything from climate modeling to AI innovation. We were featured on the evening news on the 14th of May, and the feature has subsequently been made available via TV2Fyn's YouTube channel. ▶ Find the link below to take an online tour of the SDU server room.



New UCloud Apps. We continuously receive requests to integrate new apps on UCloud. Read about the 3 latest releases (and expect more to come soon).

We hope you enjoy reading this edition. If you have any questions, comments, or suggestions, please do not hesitate to contact us. We are always happy to hear from you and assist with your eScience needs.



See you after the summer break - the next SDU eScience Center newsletter will be out in September 2025.





[SDU has the most used supercomputer in Europe](#)

Did you read about us in Ingeniøren? If not, you can find the article here (in Danish). While the debate about “AI factories” in Denmark often centers on massive hardware infrastructures, our experience with UCloud shows [Read More ...](#)



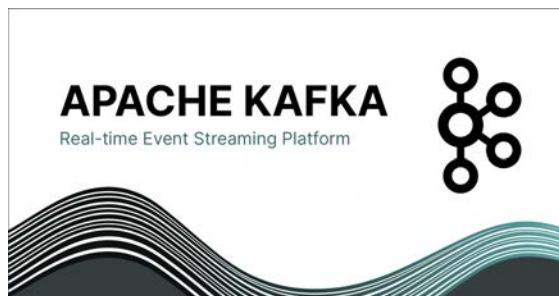
[Manage your next event with Indico: Now available on UCloud](#)

Indico is a robust open-source platform for event organization, archiving, and collaboration, ideal for managing conferences, workshops, and scientific meetings. Key features include: Event Management: Indico allows [Read More ...](#)



[Visit from TV2 Fyn](#)

Did you see us on the local news? On 14th of May 2025, TV2 Fyn aired a 5 minute feature on SDU's supercomputer. Team Leader of our Infrastructure Team, Martin Lundquist Hansen, took viewers on a tour of the SDU server room that hosts SDU's [Read More ...](#)



[New App Available: Apache Kafka](#)

Users of DeiC Interactive HPC – UCloud can now access Apache Kafka, a high-performance event streaming platform designed for managing real-time data at scale. Kafka deployments on UCloud support multi-node configurations, enabling [Read More ...](#)



[Speech Analyzer: A New AI Tool for Dialogue Analysis](#)

With growing demand for transcription/ AI services on Interactive HPC – UCloud, Speech Analyzer has been added to the platform. Speech Analyzer is a specialised application built on top of Label Studio, optimised [Read More ...](#)

Boost your research with digital tools



RESEARCH SUPPORT

From basic to high-level technical support



NATIONAL HPC SYSTEMS

Request access to storage and computing resources



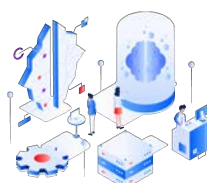
DATA MANAGE- MENT

Transfer and share research data



UCLLOUD PLATFORM

Boost your research with interactive HPC



TRAINING & TU- TORIALS

Sign in for our thematic workshops and training programs



NEW SOFTWARE APPLICATIONS

Request specific software applications



HIPPO

big memory computing



UCloud

Contact us

SDU eScience Center
University of Southern
Denmark
Campusvej 55, 5230
Odense M, Denmark
escience@sdu.dk
For user support:
support@escience.sdu.dk

eScience.sdu.dk

SDU Data Protection



Collaborations

DeiC

DTU



AALBORG
UNIVERSITY



AARHUS
UNIVERSITY