

SDU eScience center



Dear researcher at SDU

Welcome to the latest edition of the SDU eScience Center's newsletter. As always, we are pleased to bring you fresh updates, new opportunities, and exciting developments from across our center and the wider eScience community. 🌍✨ Here are the highlights:

SDU opens calls for HPC resources: Both the **SDU call for Fall 2026 HPC allocations** and the first **national HPC call of 2026** are now open. ⚙️💻 In addition, a **temporary change** in SDU's policy for large-scale HPC applications applies for the Spring 2026 period.

New tools on UCloud: Robotics and simulation researchers can now access **Isaac Sim** and **Isaac Lab** directly on UCloud 🤖, and the newly released **Dictaphone app** enables secure recording and transcription for research and teaching. 🎙️🔒

Workshops coming up: Join us for two hands-on — one on **text classification using large language models** and another on **AI-assisted labeling with CVAT**. 🧠📊

New webinar recording: If you missed it, you can now watch our webinar on securely recording and transcribing with the Dictaphone app. 📺🔒

Strengthening national AI capacity: Read about SDU's collaboration with Danfoss and HPE to build an advanced, energy-efficient data center supporting Danish AI and supercomputing research. ⚡🏛️

We hope you enjoy this edition. As always, our team is here to support your research and teaching—please reach out if you need guidance on applications and digital tools.

The next SDU eScience Center newsletter will be out April/May 2026.

Stay updated, click to follow us: 



[SDU opens call for HPC resources for fall 2026](#)

Researchers at SDU can now apply for so called “Large Projects” for HPC resources available from 1st of July to 31st of December 2026. We are still missing the official numbers for how many national resources [Read more ...](#)



[First call for national HPC resources in 2026](#)

All Danish researchers, including PhD can now apply for the national pool of HPC resources, including the Danish part of EuroHPC LUMI [Read more ...](#)



[Isaac Sim and Isaac Lab Now Available on UCloud](#)

Researchers in Denmark can now access NVIDIA Isaac Sim and NVIDIA Isaac Lab, advanced simulation platforms for robotics development, through UCloud's App Store. This integration marks a major step [Read More ...](#)



[New on UCloud: Dictaphone](#) – record and transcribe securely

Dictaphone is a new app on UCloud that researchers to record and transcribe inter- and conversations directly from their own devices. With Dictaphone, recordings are in real time to the [Read More ...](#)



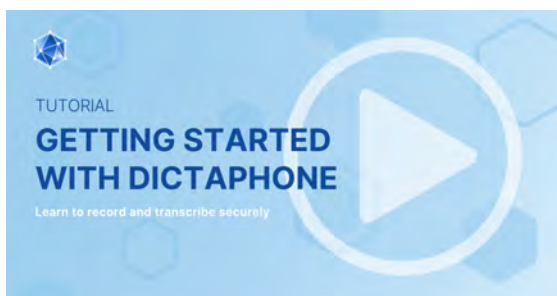
[Workshop 26/2: CVAT – AI-Assisted Labeling](#)

CVAT, Computer Vision Annotation Tool, is an interactive video and image annotation tool, designed to facilitate the annotation of video and image data and accelerate the creation of high-quality datasets for computer [Read More ...](#)



[Workshop 19/2: Text classification using large language models](#)

The purpose of this webinar is to demonstrate how to perform automated text classification using pre-trained, open-source large language models (LLMs). The efficiency that LLMs bring to otherwise laboursome [Read More ...](#)



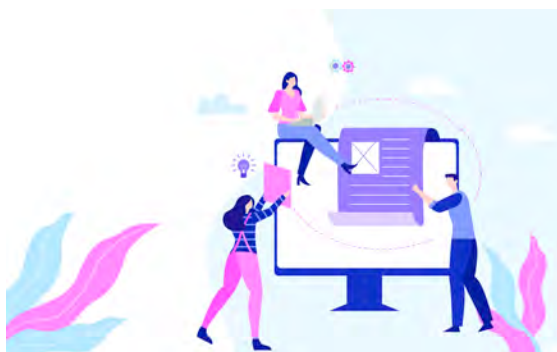
[Webinar recording: Learn to record and transcribe securely with the Dictaphone app](#)

In this webinar recording, you will watch a hands-on workshop introducing Dictaphone – a UCloud application that enables researchers to securely record and transcribe interviews [Read More ...](#)



[SDU creates advanced and energy-efficient data center for Danish AI and supercomputing research in collaboration with Danfoss and HPE](#)

The University of Southern Denmark (SDU) establishes a new supercomputer in Sønderborg that combines more sustainable energy [Read More ...](#)



[Temporary change in SDU policy for large HPC applications \(applies for spring period 2026\)](#)

For large projects (where you need more than 50.000 CPU-hours, 5.000 GPU-hours and/or 50TB of data every 6 months), it is SDU's policy that SDU researchers must [Read More ...](#)

Boost your research with digital tools



RESEARCH SUPPORT

From basic to
high-level technical
support



NATIONAL HPC SYSTEMS

Request access to
storage and com-
puting resources



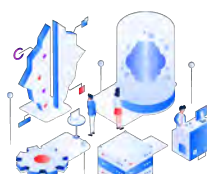
DATA MANAGE- MENT

Transfer and share
research data



UCloud PLATFORM

Boost your re-
search with inter-
active HPC



TRAINING & TU- TORIALS

Sign in for our
thematic works-
hops and training
programs



NEW SOFTWARE APPLICATIONS

Request specific
software applications



HIPPO
big memory computing



UCloud

Contact us

SDU eScience Center
University of Southern
Denmark
Campusvej 55, 5230
Odense M, Denmark
escience@sdu.dk
For user support:
support@escience.sdu.dk

eScience.sdu.dk

SDU Data Protection



Collaborations

DeiC

DTU



**AALBORG
UNIVERSITY**



**AARHUS
UNIVERSITY**