



Dear researcher at SDU

Welcome to the June 2026 edition of the SDU eScience Center's newsletter. As always, we bring you the most recent updates and exciting developments from our center and the broader eScience community. 🌍 ✨ Here are the highlights:

## **New national supercomputing capacity via UCloud** ☁️

Researchers can now access new national HPC resources directly through UCloud, making advanced computing more accessible and easier to integrate into everyday research workflows.

## **Launch of SDU's new energy-efficient supercomputer** 🌱

SDU has launched a modern and energy-efficient supercomputer that delivers high performance while supporting sustainable and responsible research computing.

## **New data centres for UCloud – what does it mean for you?** ⚙️

The rollout of new UCloud data centres improves robustness, scalability, and performance, ensuring a more future-proof platform for data-intensive research.

## **🖥️ New agreement strengthens collaboration on DeiC Interactive HPC**

A new collaboration agreement enhances access to interactive and flexible HPC solutions, supporting novel research workflows and interactive data analysis.

## **🧬 HALRIC: Shaping the future of life science research in Northern Europe**

HALRIC brings together advanced computing and data infrastructure to strengthen life science research and collaboration across Northern Europe.

We hope you enjoy reading this edition. As always, our team is here to support your research and teaching—don't hesitate to reach out with questions or for guidance on applications and tools.

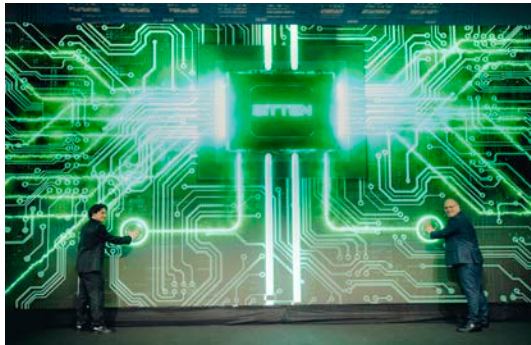
The next SDU eScience Center newsletter will be out in August 2026.





### [New national supercomputing capacity available through UCloud](#)

The newly inaugurated supercomputing facility expands access to advanced computational resources for researchers and students across Denmark via UCloud [Read More ...](#)



### [Launch of SDU's new energy efficient supercomputer](#)

The University of Southern Denmark, in collaboration with Danfoss and HPE, has brought a new national supercomputer online, enabling Danish universities to [Read More ...](#)



### [New data centre for UCloud – what does it mean for you?](#)

A new data centre for UCloud will open soon. As part of the transition, there will be a period of downtime at the end of April/beginning of May [Read More ...](#)



### [New Agreement Strengthens Collaboration on DeiC Interactive HPC](#)

Shortly before Christmas 2025, DeiC and the Interactive HPC Consortium entered into a new five-year agreement on the national HPC service, with an annual budget [Read More ...](#)



### [HALRIC: Shaping the future of life science research in northern Europe](#)

Unlocking the full potential of life science research across borders – HALRIC has connected researchers, expertise and advanced facilities across northern Europe, enabling [Read More ...](#)

# Boost your research with digital tools



## **RESEARCH SUPPORT**

From basic to high-level technical support



## **NATIONAL HPC SYSTEMS**

Request access to storage and computing resources



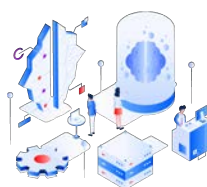
## **DATA MANAGEMENT**

Transfer and share research data



## **UCLLOUD PLATFORM**

Boost your research with interactive HPC



## **TRAINING & TUTORIALS**

Sign in for our thematic workshops and training programs



## **NEW SOFTWARE APPLICATIONS**

Request specific software applications



**HIPPO**  
big memory computing



**UCloud**

## Contact us

SDU eScience Center  
University of Southern  
Denmark  
Campusvej 55, 5230  
Odense M, Denmark  
escience@sdu.dk  
For user support:  
support@escience.sdu.dk

eScience.sdu.dk

## SDU Data Protection

ISO 27001

**BUREAU VERITAS**  
Certification



## Collaborations

**DeiC**



**AALBORG UNIVERSITY**



**AARHUS UNIVERSITY**