






Dear researcher at SDU


Summer has arrived, but before embarking on your well-deserved vacation, we hope you will spend some time with us and get the latest news and updates from our center and the wider eScience community. Here are the highlights from the June edition of our newsletter:

 We're incredibly proud to introduce the **new UCloud Interface!** The update was implemented on the 14th of May and reflects an extensive work and meticulous examination of every aspect of the user interface performed by the developers here at the SDU eScience Center. The update rolled around just as the platform reached **10.000 users!**

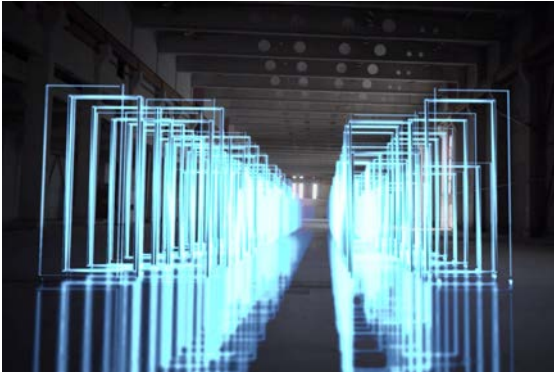
 **Read an interview** with Dr. Valerio Rizzo, head of AI & SME at Lenovo's EMEA (Europe, Middle East and Africa) division. Dr. Rizzo talks about the AI revolution that is currently taking place in research and Lenovo's role in the production of the world's most powerful hardware for AI: H100 NVIDIA GPUs. 16 of these GPUs were recently added to the DeiC Interactive HPC service, **available to all Danish researchers** via UCloud, and 16 more are expected by the end of the year.

 Associate professor **Antonio Rago** from the Department of Mathematics and Computer Science at SDU is part of several international research groups, whose innovative research seeks to uncover some of the big unanswered questions within the field of particle physics. In the last two years, they have secured a hugely impressive **483.000.000 CPU core hours** and **1.634.000 GPU node hours** via various large High Performance Computing (HPC) grants!

We hope you enjoy reading. If you have any questions, comments, or suggestions, please do not hesitate to contact us. We are always happy to hear from you and assist you with your eScience needs.

The next SDU eScience Center newsletter will be out in September 2024. Have a great summer! 





[SDU researcher continues to secure record-breaking HPC grants](#)

Several acceptance letters for large HPC grants have recently landed in associate professor at the Department of Mathematics and Computer Science, Antonio Rago's, email inbox. Antonio Rago is part of several international research groups, whose [Read More ...](#)



[New UCloud User Interface](#)

DeiC Interactive HPC is excited to roll out the new User Interface on the UCloud platform, designed to simplify processes and enhance the user experience. The updated interface, serving 10,000 users (and growing), signifies the dedication to [Read More ...](#)



[Denmark's Leap into Advanced AI Research with H100 GPUs](#)

Denmark has marked a significant milestone in computational research with the addition of 16 NVIDIA H100 GPUs to the DeiC Interactive HPC service, and 16 more are expected by the end of the year. The tender for the acquisition of the GPUs was awarded [Read More ...](#)

Boost your research with digital tools



RESEARCH SUPPORT

From basic to high-level technical support



NATIONAL HPC SYSTEMS

Request access to storage and computing resources



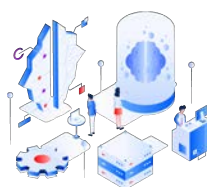
DATA MANAGEMENT

Transfer and share research data



UCLLOUD PLATFORM

Boost your research with interactive HPC



TRAINING & TUTORIALS

Sign in for our thematic workshops and training programs



NEW SOFTWARE APPLICATIONS

Request specific software applications



HIPPO
big memory computing



Contact us

SDU eScience Center
University of Southern
Denmark
Campusvej 55, 5230
Odense M, Denmark
escience@sdu.dk
For user support:
support@escience.sdu.dk

eScience.sdu.dk

SDU Data Protection



Collaborations



AALBORG
UNIVERSITY



AARHUS
UNIVERSITY